



OFFICE SPACE AVAILABLE

4700 Forest Drive

COLUMBIA, SOUTH CAROLINA 29206



Duane Heydt
Brokerage Associate
803.920.3620
dheydt@wilsonkibler.com

Mike Edwards
Senior Brokerage Associate
803.255.8607
mikeedwards@wilsonkibler.com

1545 SUMTER STREET, COLUMBIA, S.C. 29201 | www.wilsonkibler.com

THE INFORMATION CONTAINED HEREIN HAS BEEN GIVEN TO US BY THE OWNER OF THE PROPERTY OR OTHER SOURCES WE DEEM RELIABLE. WE HAVE NO REASON TO DOUBT ITS ACCURACY, BUT WE DO NOT GUARANTEE IT. ALL INFORMATION SHOULD BE VERIFIED PRIOR TO PURCHASE OR LEASE.

4700 FOREST DRIVE

COLUMBIA, SOUTH CAROLINA 29206



PROPERTY : The building totals $\pm 21,600$ SF and is located in the heart of Forest Acres across the street from the Cardinal Crossing redevelopment site. The building is located within walking distance to an abundance of high quality retail stores, including shopping, dining, and fitness locations.

AVAILABILITY: $\pm 1,169$ SF - $\pm 9,720$ SF Available - 2nd Floor

- ◆ Medical Use Preferred
- ◆ Will Subdivide space as needed

PARKING: 92 surface parking spaces

LEASE RATE: \$17.00 NNN

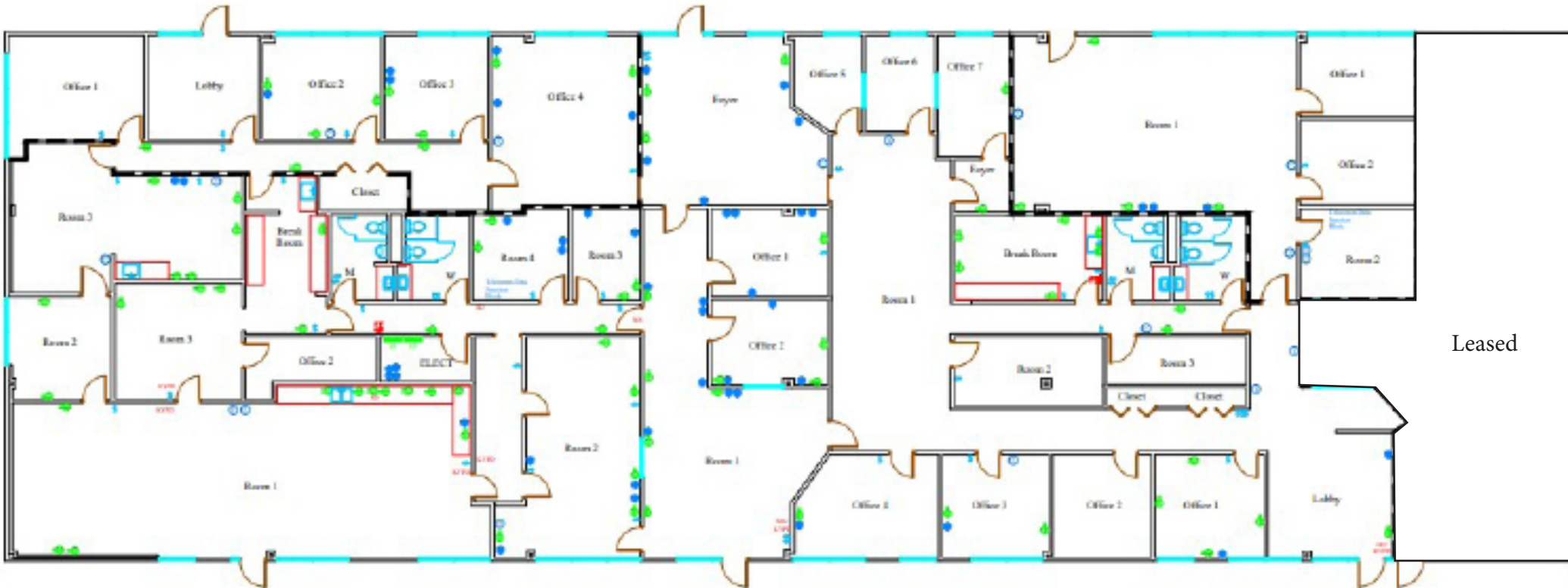


4700 FOREST DRIVE

COLUMBIA, SOUTH CAROLINA 29206



2nd Floor - Floor Plan



Leased

4700 FOREST DRIVE

COLUMBIA, SOUTH CAROLINA 29206

Amenities Map

