

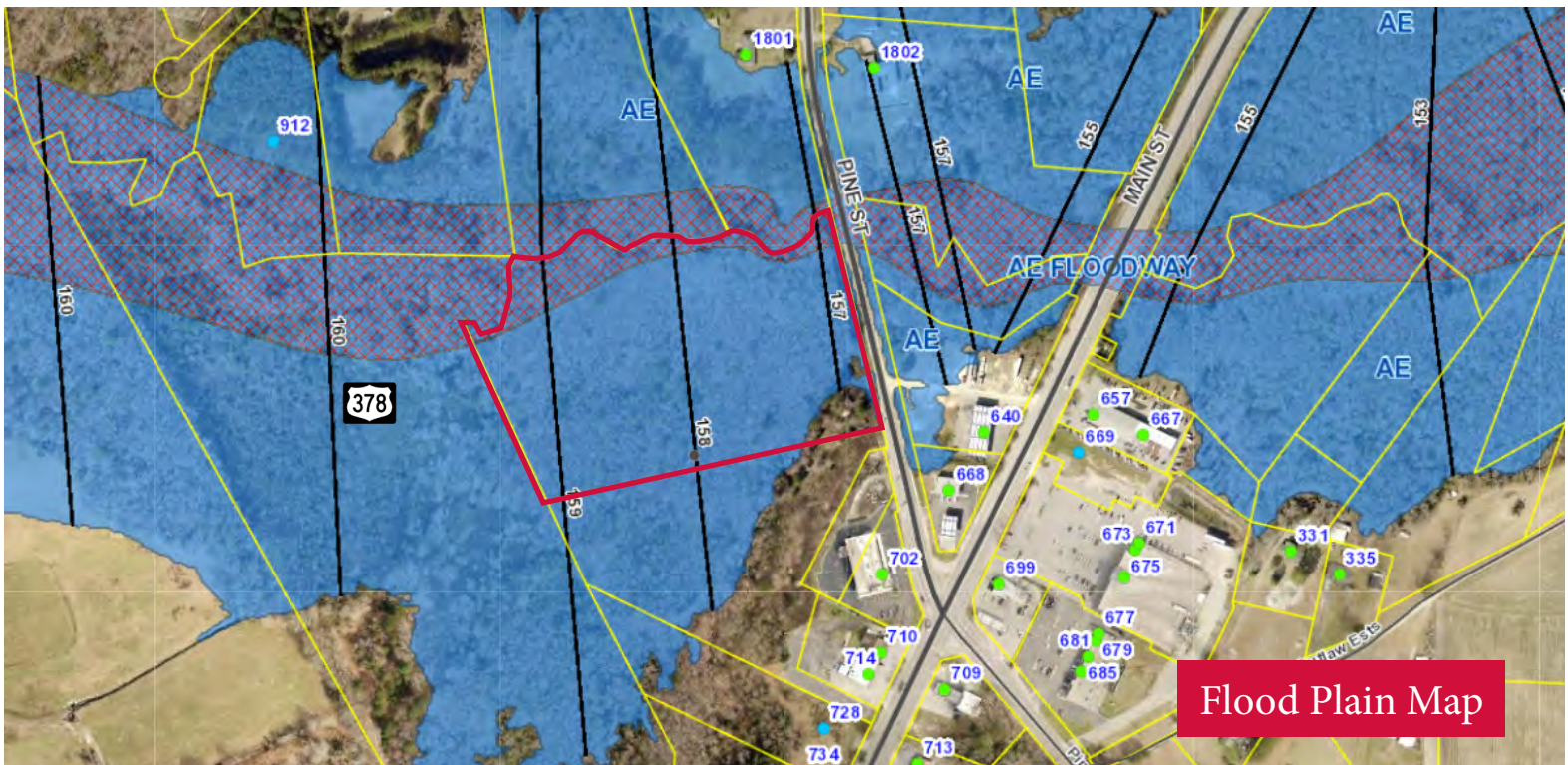
Congaree Land Tract

TMS #006798-08-038

 W COLUMBIA, SC 29170



- ±12.69 AC of raw land available for sale in South Congaree
- Street Address: 145 Seibel Road, West Columbia, SC 29170
- Zoning: General Commercial
- Adjacent to Walgreens and across from a Food Lion-anchored Shopping Center
- Proximate to Columbia Metropolitan Airport (CAE)
- **SALES PRICE: \$60,000**



LEE BUSSELL, JR. | lbussell@wilsonkibler.com | 803.255.8641

WILSON KIBLER | 1111 LAUREL STREET | COLUMBIA, SC | 803.779.8600 | www.wilsonkibler.com

The information contained herein has been obtained from sources we believe to be reliable; however, Wilson Kibler has not conducted any investigation regarding these matters and makes no warranty or representation whatsoever regarding the accuracy or completeness of the information provided.

